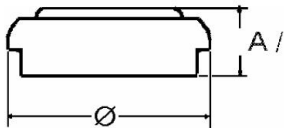


Type Number..... 4626
 Designation IEC..... LR9
 System..... Manganese Dioxide/
 Zinc/KOH-Electrolyte



Nominal Voltage..... 1.5V
 Typical Capacity C..... 150 mAh
 Weight (approx.)..... 3,50 g



Temperature Ranges min max.
 Storage..... -10°C 65°C
 Discharge..... -10°C 65°C

Dimensions min max.
 Diameter..... 15,20 16,00
 Height (A/B)..... 5,60 6,20

Typical Capacities (at 20°C)

Discharge Type	Load	End Voltage:	0.9V
Continuous 24h/d, 7d/w	390 Ω	Time: Capacity:	39 h 125 mAh

All Data contained herein is for single cells
 For battery applications, performance data may vary from single cell data, depending on specific battery configuration

No publication or circulation of data to third parties without consent of VARTA Consumer Batteries