



Model : Power-Xtra CR2477 3V 950mAh

Ver: A0

NO:

CR2477 Battery Spec

电池规格书

Model: CR2477

Nominal Voltage: 3.0V

Capacity: 950mAh

Draft 起草	To examine 审核	Approved 批准	Customer Confirmation 客户确认
Peter			

POWER-XTRA

Model : Power-Xtra CR2477 3V 950mAh

Ver: A0

NO:

1. 【SCOPE】

This specification applies to the following 3.0v lithium button cell CR2477 made by Power Xtra.

2. 【RATINGS】

TABLE I :

ITEM		UNIT	SPECIFICATIONS	CONDITIONS
Nominal voltage		V	3.0	
Nominal capacity		mAh	950	Standard discharge with load 7.5k Ω
Instantaneous short-circuit current		mA	≥ 350	Time ≤ 0.5 second
Off-load voltage		V	3.25~3.45	
Operating temperature		$^{\circ}\text{C}$	-20~60	
Standard weight		g	~8.5	Unit cell
Service output	Initial	Standard	$\geq 950\text{h}$	Continuous discharge with load 3.0k Ω , till 2.0v end-voltage at $20 \pm 2^{\circ}\text{C}$
	After 12 months storage	Standard	$\geq 931\text{h}$	

3. 【PERFORMANCE AND TEST METHODS】

Unless otherwise stated, all the testing is carried out under the condition: environmental temperature, 20 $^{\circ}\text{C}$ ~25 $^{\circ}\text{C}$; environmental humidity, 65 \pm 15%. Please refer to Table III

4. 【SUGGESTIONS AND CAUTIONS】

- 4.1 Install batteries correctly.
- 4.2 Ensure the contact points to be clean and conductive.
- 4.3 Do not mix different types, different brands batteries to serve together.
- 4.4 Do not heat, recharge the batteries.
- 4.5 Do not dispose of the batteries in fire.
- 4.6 Keep away from the small children, if swallowed promptly see doctor.
- 4.7 Pay attention to the producing date.

POWER-XTRA

Model : Power-Xtra CR2477 3V 950mAh

Ver: A0

NO:

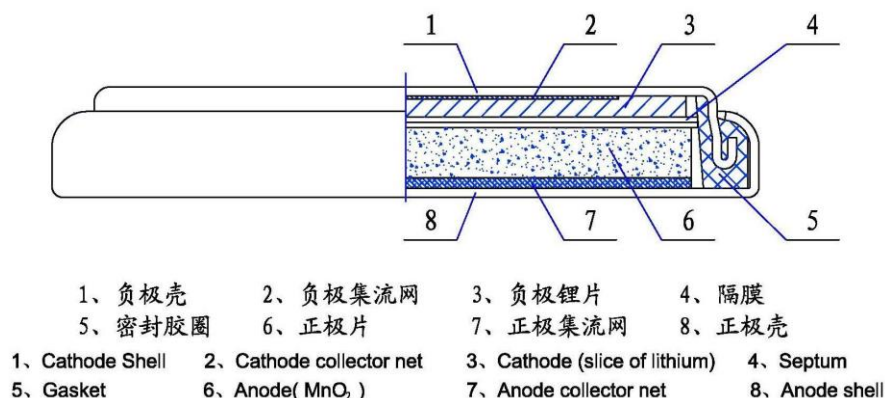
TABLE III:

No	ITEM	TEST METHODS	STANDARD	
1	Dimensions	Using vernier caliper (accuracy ≥ 0.02) while avoiding short-circuit	Diameter	24.5 (-0.20) mm
			Height	7.7 (-0.20) mm
2	Off-load voltage	Using multimeter (accuracy $\geq 0.25\%$) internal resistance $\geq 1M\Omega$	3.25-3.45V	
3	Instantaneous short-circuit current	Time of short-circuit should be less than 0.5 second and avoid repeated test within half an hour	≥ 350 mA	
4	Appearance	Eyeballing	Bright, clean, no rust, no leakage, And no flaw	
5	Capacity	Continuously discharge with load 4.7k Ω , temperature at 20~25 $^{\circ}\text{C}$, humidity at 65 \pm 20% till 2.0v end-voltage (for fresh battery only: within 3 months)	≥ 1332 h	
6	Vibration test	Put battery on the platform of the vibrations machine, start the machine and adjust the frequency form 10 times per minute to 15 times per minute. keep it running for an hour	Characteristics keep stability	
7	Leakage at high temperature test	Stored under temperature (50 $^{\circ}\text{C}$) for 10 days	No leakage allowed	
8	Over discharge Test	After 2.0v end-voltage, continuously discharged for 5 hours	No leakage allowed	

5. 【CUTAWAY DIAGRAM OF 3.0V LITHIUM MANGANESE DIOXIDE BUTTON CELL】

3.0V 锂—二氧化锰扣式电池剖面图

Cutaway Diagram of 3.0V Lithium Manganese Dioxide Button Cell

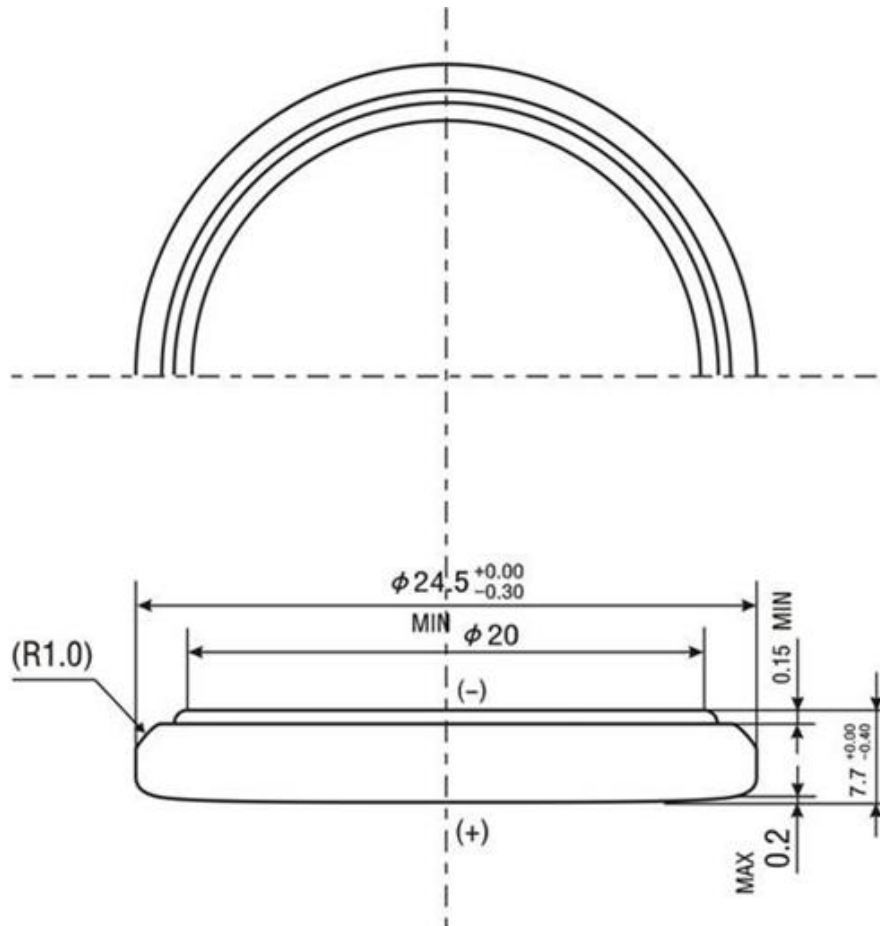


POWER-XTRA

Model : Power-Xtra CR2477 3V 950mAh

Ver: A0

NO:



POWER-XTRA

Model : Power-Xtra CR2477 3V 950mAh

Ver: A0

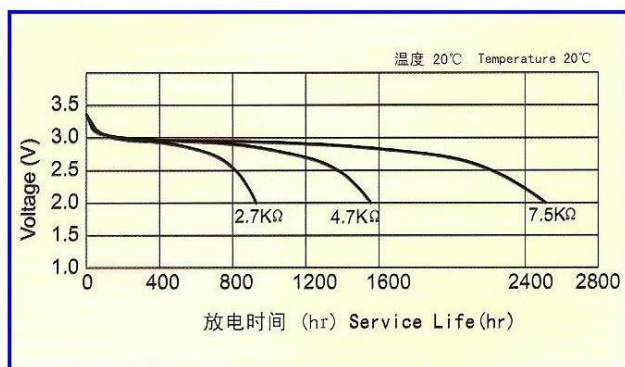
NO:

6. 【DISCHARGE CHARACTERISTICS】

标准曲线 STANDARD CHARACTERISTICS

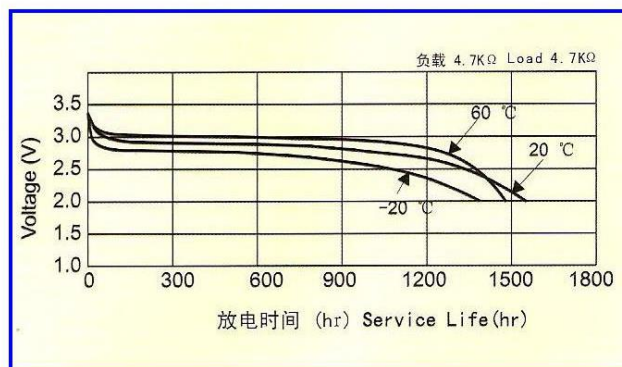
定电阻放电曲线

Discharge Characteristics



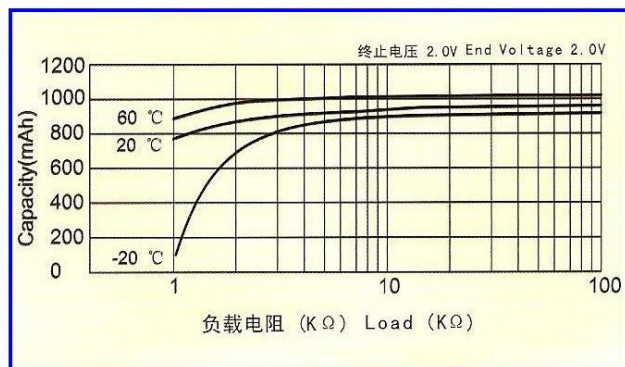
温度放电曲线

Temperature Characteristics



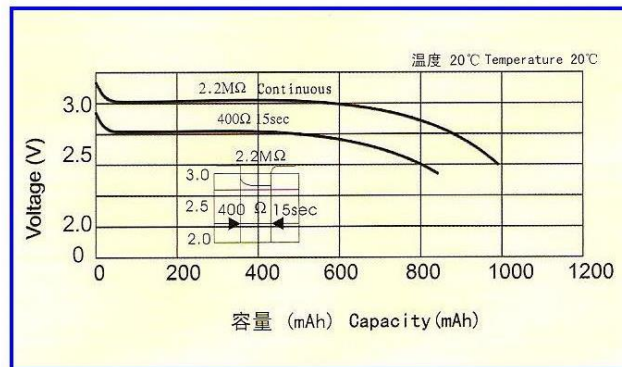
电阻容量曲线

Load-capacity



脉冲放电曲线

Pulse Discharge Characteristics



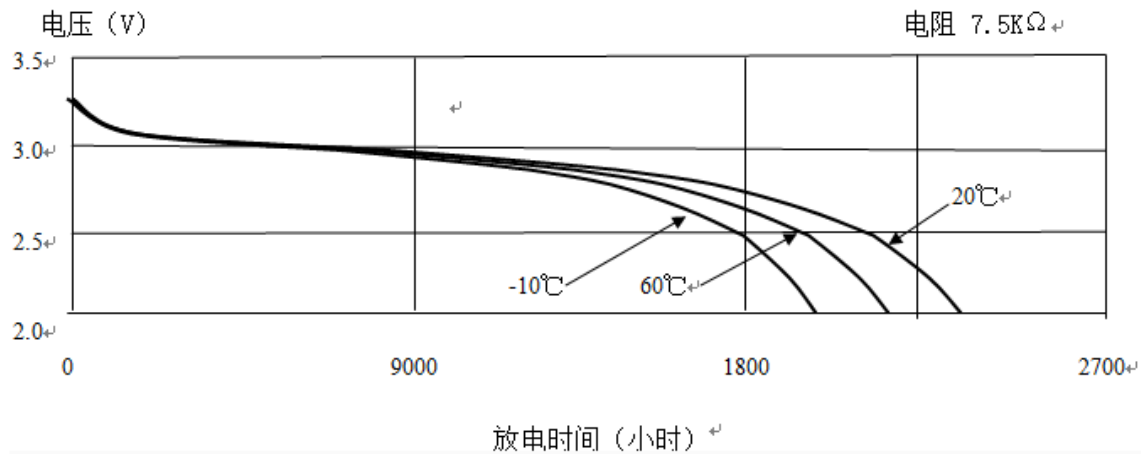
POWER-XTRA

Model : Power-Xtra CR2477 3V 950mAh

Ver: A0

NO:

电阻放电曲线 (Discharge characteristics on load) ↵



7. DRAWING

