

# power-xtra

## Power-Xtra CR1025 - 3V Lithium Li-MnO<sub>2</sub> Battery - Bulk

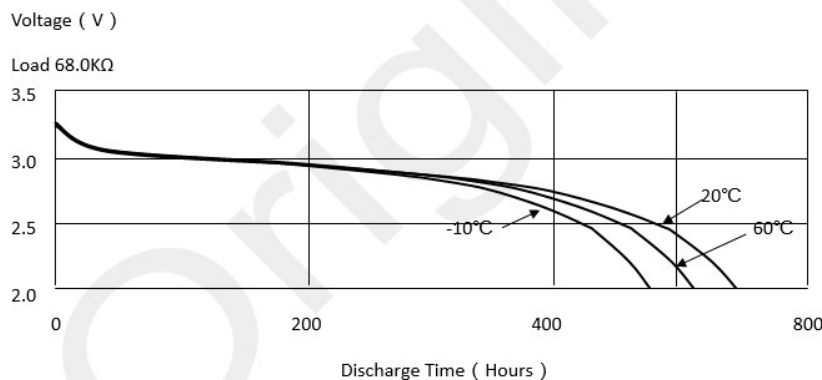
### SPECIFICATIONS OF SINGLE CELL

Type	Li-MnO <sub>2</sub> Buton with Pins
Stock Code	900.600.503.463
Model	CR1025, CR-1025, PX-CR1025,1S1P

### TECHNICAL INFORMATION

Item	Specifications	Conditions
Nominal Voltage	3.0V	
Typical Capacity	30 mAh	30mAh (Load: 68K ohm, End voltage 2.0V)
Instantaneous short-circuit current	≥80 mA	Time ≤ 0.5 second
End voltage	≥2.00 V	No load
Service Output - Initial	≥100	Discharge load 10kΩ, Temperature 20±2°C, under the condition of related humidity ≤ 75%RH
Service Output - After 12 months storage	≥97	
Typical Weight	0.55 gr	
Recommended Storage Temperature Range	20+/-2°C	5 years after delivery under proper storage conditions.
Recommended Operation Temperature Range	-20° C to 60°C	
Shelf Life	3-5 Years	Recommended Storage Range : 20+/-2°C Recommended Humidity Range : 65+/-20%RH

### Discharge Characteristics

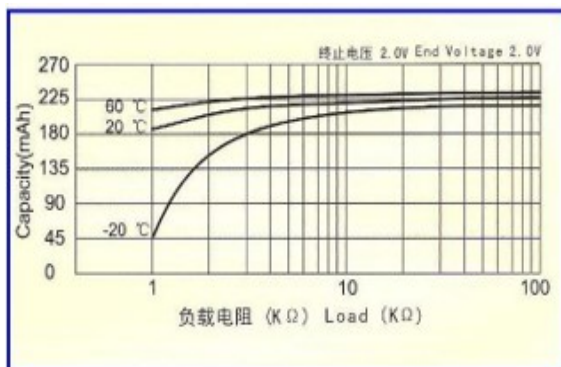


REV002-Revised Date:29.07.2024

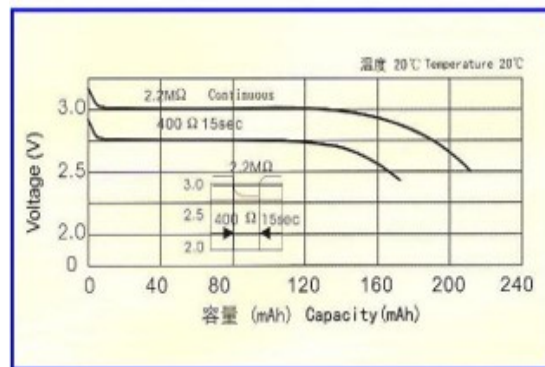
# power-xtra

## Power-Xtra CR1025 - 3V Lithium Li-MnO<sub>2</sub> Battery - Bulk

### Load Capacity



### Pulse Discharge Characteristics



## TECHNICAL INFORMATION

Item	Test Methods	STANDARD	
Dimension	Using vernier caliper (accuracy $\geq$ 0.02) while avoiding short-circuit	Diameter	10.00 (-0.2) mm
		Height	2.5 ( $\pm$ 0.1) mm
Open circuit voltage	Precision is 0.25% or more precise, resistance of internal circuit is bigger than 1 MΩ DDM.	$\geq$ 3.20v	
Instantaneous short-circuit current	Using pointer multimeter for test, the time is not more than 0.5', avoid duplicated test, the time for next test should be after half an hours	$\geq$ 100 mA	
Appearance	Eyeballing	Bright, clean, no rust, no leakage, And no flaw	
Quick Discharged Volume	Standard Temperature 20 $\pm$ 2°C, related humidity $\leq$ 75%RH, discharge load 10kΩ, terminated voltage be 2.0V	$\geq$ 100 hours	
Vibration test	Vibrate frequency 100-150 times per min under continuously vibration for 1 hour	Characteristics keep stability	
High temperature-resistant of weeping performance	Storage 30 days Under 45 $\pm$ 2 conditions	leakage % $\leq$ 0.0001	
Circuit load of weeping performance	When terminated voltage is 2.0V, continuously discharge load for 5hrs	No leakage allowed	

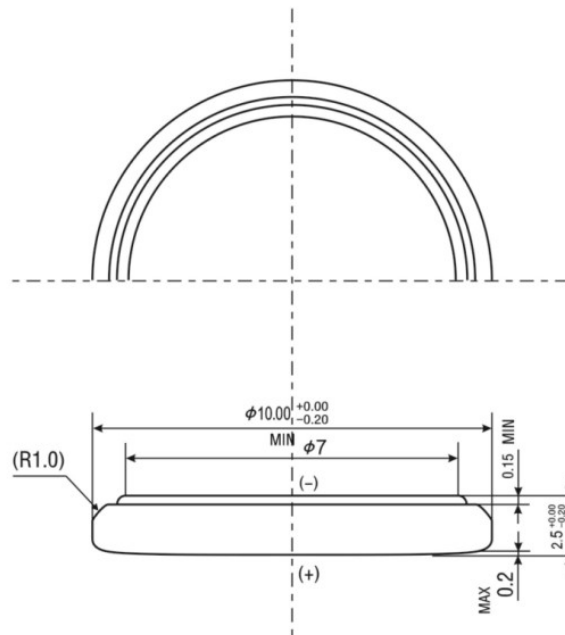
# power-xtra

## Power-Xtra CR1025 - 3V Lithium Li-MnO<sub>2</sub> Battery - Bulk

### Image and Technical Drawings

Image

Technical Drawing



### Dimension

Size	Width	10.0±0.5mm
	Length	2.5±0.5mm
	Height	2.5±0.5mm
	Cable	-
	Plug	-