

power-xtra

Power-Xtra CR927 - 3V Lithium Li-MnO₂ Battery - Bulk

SPECIFICATIONS OF SINGLE CELL

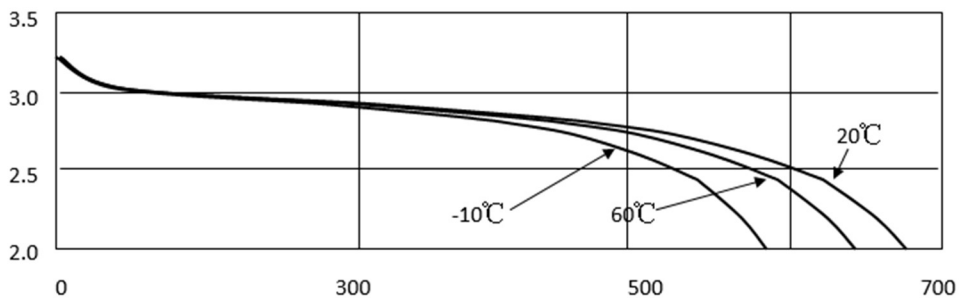
Type Li-MnO₂ Buton with Pins
Stock Code 900.600.503.464
Model CR927, CR-927, PX-CR927,1S1P

TECHNICAL INFORMATIONs

Item	Specifications	Conditions
Nominal Voltage	3.0V	
Typical Capacity	30 mAh	30mAh (Load: 68K ohm, End voltage 2.0V)
Instantaneous short-circuit current	≥80 mA	Time≤0.5 second
End voltage	≥2.00 V	No load
Service Output - Initial	≥100	Discharge load 10kΩ, Temperature 20±2°C, under the condition of related humidity≤75%RH
Service Output - After 12 months storage	≥97	
Typical Weight	0.55 gr	
Recommended Storage Temperature Range	20+/-2°C	5 years after delivery under proper storage conditions.
Recommended Operation Temperature Range	-20° C to 60°C	
Shelf Life	3-5 Years	Recommended Storage Range : 20+/-2°C Recommended Humidity Range : 65+/-20%RH

Discharge Characteristics

Load 68.0KΩ

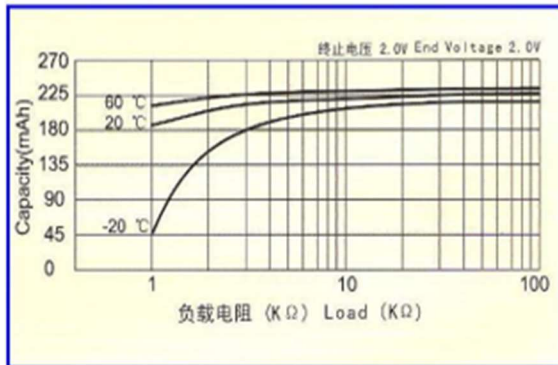


REV001-Revised Date:29.07.2024

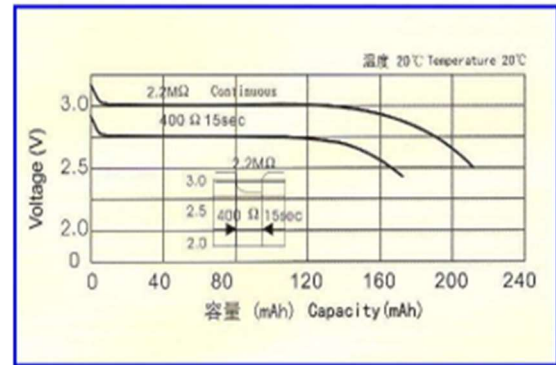
power-xtra

Power-Xtra CR927 - 3V Lithium Li-MnO₂ Battery - Bulk

Load Capacity



Pulse Discharge Characteristics



TECHNICAL INFORMATION

Item	Test Methods	STANDARD	
Dimension	Using vernier caliper (accuracy \geq 0.02) while avoiding short-circuit	Diameter	9.50 (-0.2) mm
		Height	2.7 (\pm 0.1) mm
Open circuit voltage	Precision is 0.25% or more precise, resistance of internal circuit is bigger than 1 MΩ DDM.	\geq 3.20v	
Instantaneous short-circuit current	Using pointer multimeter for test, the time is not more than 0.5', avoid duplicated test, the time for next test should be after half an hours	\geq 80 mA	
Appearance	Eyeballing	Bright, clean, no rust, no leakage, And no flaw	
Quick Discharged Volume	Standard Temperature $20\pm 2^{\circ}\text{C}$, related humidity \leq 75%RH, discharge load 10kΩ, terminated voltage be 2.0V	\geq 100 hours	
Vibration test	Vibrate frequency 100-150 times per min under continuously vibration for 1 hour	Characteristics keep stability	
High temperature-resistant of weeping performance	Storage 30 days Under 45 ± 2 conditions	leakage % \leq 0.0001	
Circuit load of weeping performance	When terminated voltage is 2.0V, continuously discharge load for 5hrs	No leakage allowed	

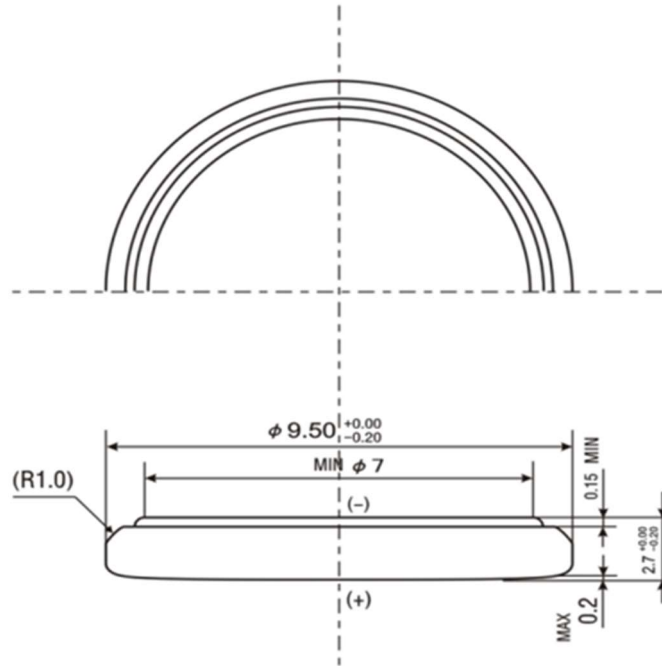
power-xtra

Power-Xtra CR927 - 3V Lithium Li-MnO₂ Battery - Bulk

Image and Technical Drawings

Image

Technical Drawing



Dimension

Size	Width	9.5±0.5mm
	Length	9.5±0.5mm
	Height	2.7±0.5mm
	Cable	-
	Plug	-